

# From **aiding** towards **empowering**



Annual Report  
**2025**

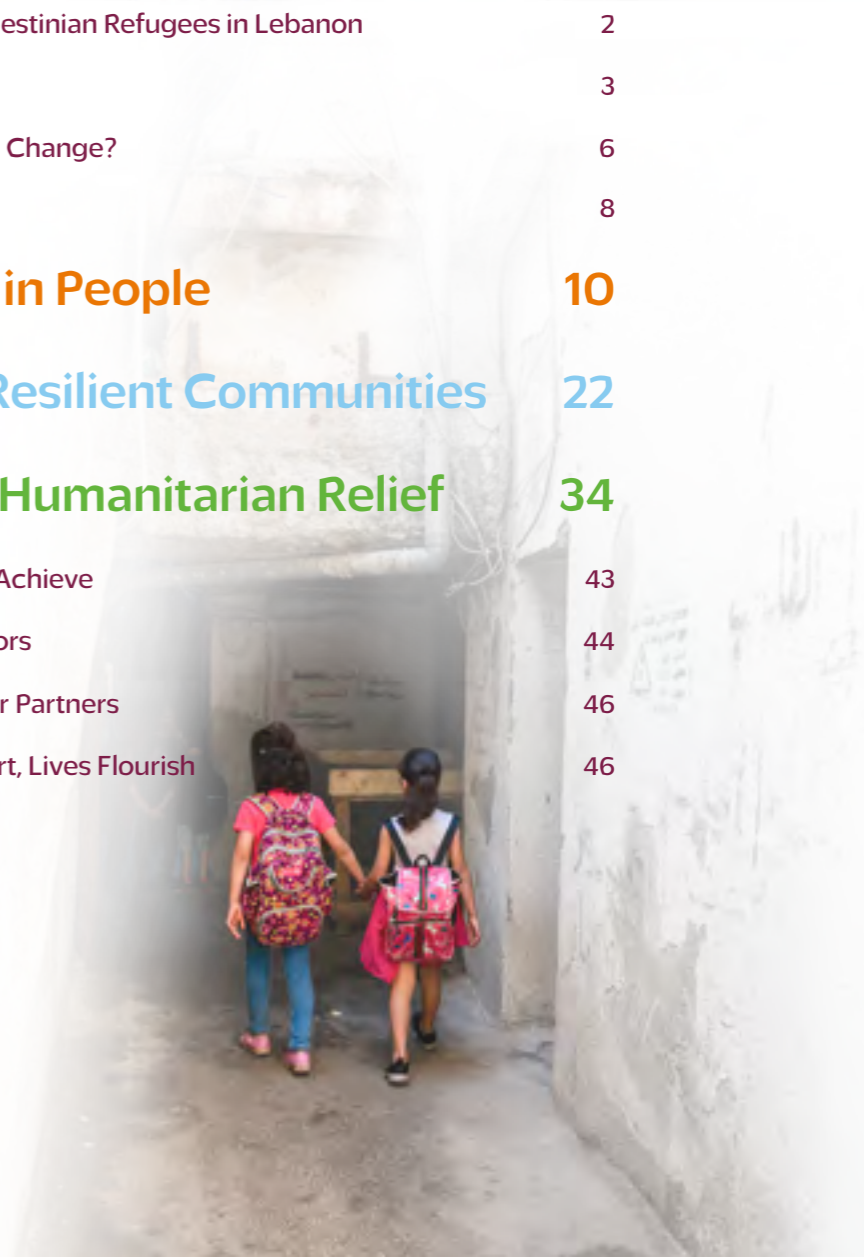


Lebanon Branch



# Table of Content

The Reality of Palestinian Refugees in Lebanon	2
Taawon Speaks	3
How Do We Lead Change?	6
In the Spotlight	8
<b>Investing in People</b>	<b>10</b>
<b>Building Resilient Communities</b>	<b>22</b>
<b>Securing Humanitarian Relief</b>	<b>34</b>
What We Aim to Achieve	43
Financial Indicators	44
Growing with Our Partners	46
With Your Support, Lives Flourish	46



# The Reality of Palestinian Refugees in Lebanon

Palestinian refugees in Lebanon live within two overlapping realities: the broader Lebanese context marked by economic collapse, limited employment opportunities, security instability, and the constant shadow of war, and the reality of being a refugee living in deteriorating camps, inadequate health conditions, and restrictions on access

to decent work and quality education. The UNRWA crisis has further eroded access to basic and social services.

Today, more than **83% of Palestinian families live below the poverty line, and nearly 95% lack health coverage.**

“We live on the margins, in constant fear of what tomorrow may bring. Our days are an ongoing race for survival.”



# Taawon Speaks

Each year brings a new set of challenges, and each year we find ourselves racing to respond to their consequences. From the large-scale war on Lebanon last year to funding constraints at the beginning of this one, our efforts doubled to safeguard our development and humanitarian priorities and uphold our responsibility toward the communities we serve.

Funding was the most significant challenge facing development and humanitarian organizations in 2025. Shifts in funding priorities, volumes, and channels had far-reaching implications across the sector. Many organizations struggled to sustain their programs; some were forced to scale down or redesign ongoing projects.

In such circumstances, success is measured by how close an organization remains to people, the extent to which it can respond to their needs, support them, and accompany their aspirations. Against this backdrop, Taawon largely maintained its planned funding levels, ensuring program continuity and delivering interventions that restored hope and reaffirmed that the Palestinian refugee community in Lebanon is not alone.

Although donor priorities are currently leaning toward emergency relief, we continue to expand our development work. We are

convinced that long-term change begins with investing in people and their potential.

As we present the achievements of 2025, we extend our deepest thanks to our donors, partners, and to our headquarters for their continued support. We also thank our General Assembly, Board of Directors, and our dedicated team whose efforts are reflected in every impact we have achieved.

We look ahead with confidence to a new year of work, and to new stories of success, hope, and opportunity.

— **Wafaa El-Yassir**

Chairperson of the Board



# Pathways for Change

## Investing in People



Empowering Palestinians to build a better future

## Building Resilient Communities



Supporting communities and strengthening their capacity to adapt

## Securing Humanitarian Support

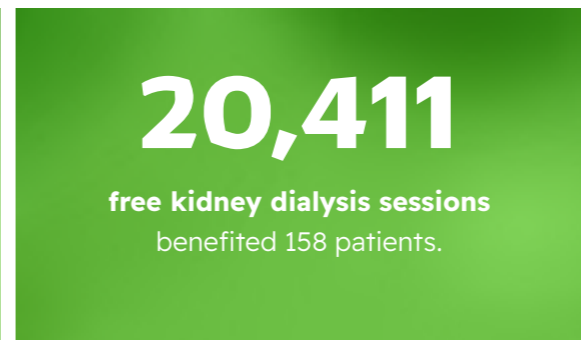
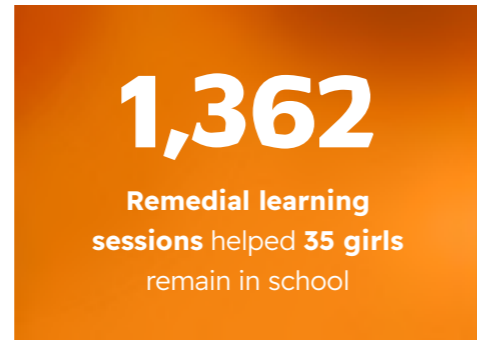


Responding to the most urgent needs



# How Do We Lead Change?

In 2025, our impact continued to grow across Palestinian communities in Lebanon, thanks to the trust of our donors and the commitment of our partners on the ground, our impact continued to grow across Palestinian communities in Lebanon:



# In the Spotlight

## Taawon convenes more than 70 disability-sector specialists in Lebanon

Taawon organized a national conference titled: “**Towards Inclusion of Persons with Disabilities in Lebanon: Taawon’s Model Initiatives and Pathways for Broader Impact.**”, under the patronage of the Minister of Social Affairs.



The event brought together representatives from the Ministry of Social Affairs, UN agencies, international organizations, and Lebanese and Palestinian civil society. Participants emphasized the need to move from charity-based approaches to rights-based development pathways, strengthen coordination and partnerships, and advance public policies that ensure dignity, autonomy, and equal opportunities.

# Investing in People

- ◆ Doors to Education
- ◆ Learn to Lead



# Doors to Education

## Early Childhood Education

Early childhood education is the foundation for lifelong learning.

Because this stage falls outside UNRWA's education mandate and is delivered mainly by local organizations, Taawon supports the early childhood education program that promotes **quality, inclusive, and active learning environments**, well-equipped facilities, and skilled educators.

The program brings together 60 kindergartens across all camps, reaching more than 6,000 children.



Photo by: Fraternity Association for Social and Cultural Work

## Key results

Capacity building for **35+ educators** through specialized training and classroom coaching

Job security for **around 450 teachers** through salary support

Development and distribution of **specialized learning resources**

Infrastructure upgrades in **15 inclusive kindergartens**

Early malnutrition screening for **6,000+ children**

## What impact did we achieve?

Teachers reported **acquiring interactive teaching skills** that improved both learning outcomes and communication with children.



Photo by: Jannat Al-Ibdaa Association



“The specialized training I received was crucial in enabling me to design inclusive, learning-stimulating activities that respond to the needs of different children. In the classroom, I became able to distinguish between activity modification and accommodation in order to deliver the required concepts to each child according to their abilities. Keeping pace with children’s individual differences is essential to ensure they benefit from early childhood education. This is a qualitative addition to my work and a significant step forward that I am proud of.

— **Souheir Al-Ahmad**  
 Teacher at Beit Atfal Al-Sumoud Kindergarten

## School Education – STARS

School dropout is a growing challenge facing Palestinian communities in Lebanon, as enrolment rates in higher grades continue to decline and the deepening UNRWA crisis further affects the quality of education.

The **STARS** Dropout Prevention Programme provides academic support and individual follow-up to 35 eighth- and ninth-grade girls in Beddawi Camp, helping them remain in school and protecting them from the risk of dropping out.

The programme delivered **1,362 remedial sessions** in core subjects (Arabic, English, Mathematics, and Science), along with **65 psychosocial support sessions** that strengthened their life skills, mental well-being, and ability to express themselves.

Activities also engaged parents and teachers to ensure a comprehensive and consistent follow-up on the students' progress.

### What impact did we achieve?

Improved academic performance, motivation, and school retention among all participants.



After my academic performance declined in Grade 8, I lost the motivation to go to school and, with it, my self-confidence. I felt that I would never be able to succeed. Joining the STARS programme was like a final attempt to decide whether I would stay in school or drop out. I received remedial classes in core subjects such as Mathematics and Science, which led to higher grades and my successful promotion to Grade 9.

— Safaa  
Beddawi Camp



## Higher Education

Many Palestinian youth who succeed in completing their school education find themselves standing powerless at the gates of universities, held back by high tuition fees.

In response, we provide scholarships and loans that enable them to continue their academic journey at leading private universities in Lebanon.

In 2025, we supported the education of **276 students across universities** in Lebanon (31 students received university scholarships and 245 benefited from interest free loans), and we celebrated the graduation of 111 students whose degrees will open the doors to their future.

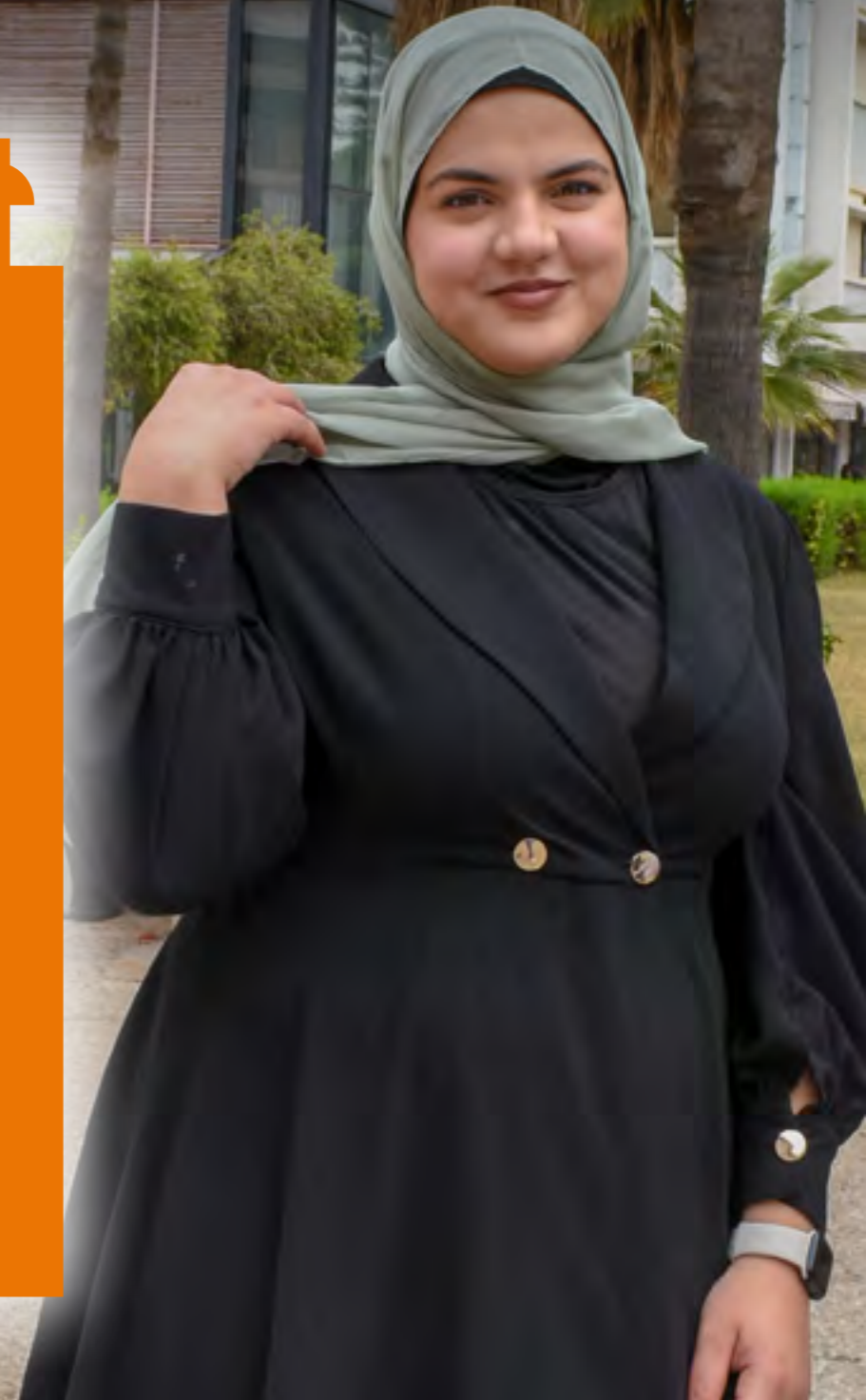


## What impact did we achieve?

Two-thirds of the graduates are either employed or pursuing further studies. Most of those who are working earn a stable monthly income, reflecting a successful transition from education to the labour market despite Lebanon's severe economic challenges.

I was always among the top students in my class, and my dream was to become a doctor. But I had to stop my studies due to difficult family circumstances. I refused to give up. I left my home in Mieh Mieh Camp and moved to Beirut to be close to the university and continued my journey. Today, I am in my fifth year of medical school, and I work at the same time to support myself. I know my path is still long, but it would have been almost impossible without the support I received. Thank you for opening the way for me to become who I want to be!

— **Fatima Akl**  
Mieh Mieh Camp



# Learn to Lead

## Vocational Education

Poverty and deteriorating living conditions force many young people to enter the labour market early, without the preparation or qualifications that can protect them.

Our programme works to equip youth who have not obtained their secondary school certificate with the skills needed to access employment, while keeping the door open for them to pursue higher education in the future.

A total of **122 students** benefit from full scholarships that enable them to obtain high-quality vocational education at accredited institutes. The programme also delivers specialized training sessions to strengthen their competitiveness and employment prospects, covering CV writing, job interview skills, and effective communication.

In 2025, we celebrated the **graduation of 45 young men and women.**

## What impact did we achieve?

One in every three students expressed their readiness to continue their education and obtain higher technical qualifications or to enroll in university after graduation.



My success in the nursing care specialization, and ranking fourth in Lebanon, was a double joy and a fair recognition of my hard work and determination to succeed. Today, after earning my technical baccalaureate, I am seeking to enter university to broaden my opportunities in the labour market. Without the scholarship that covered my full tuition fees, I would not have been able to dedicate myself to my studies and achieve this accomplishment. I feel deep gratitude to everyone who gave me this opportunity.”

— **Youssef Issa**  
Ein El Hilweh Camp



# Building Resilient Communities

- ◆ Health Forward
- ◆ Towards a Stronger Society



# Health Forward

## Disability and Inclusion

By combining long-term strategies to reach an inclusive community with immediate action to deliver essential therapy and mobility aids,

This program has taken on the responsibility of meeting the urgent needs of people with disabilities while also strengthening the organizations that serve them.

Our efforts are guided by three core pillars: **building capacities, developing resources,** and expanding **access to rehabilitation and therapy.**

### Under building the capacities of organizations working in the disability sector,

We focused on enhancing efficiency and improving the quality and sustainability of inclusive services through:

**Training in inclusive strategic planning and participatory decision-making,** targeting 19 participants from **13 partner organizations**, followed by on-site follow-up sessions and one-on-one coaching for **7 partner organizations**.

**Training in inclusive service quality management** for representatives of **11 partner organizations**, combined with on-site support and individualized guidance for **6 organizations** to practically implement quality management systems.

**A specialized training on disability inclusion** within civil society organizations, engaging **17 participants from 9 partner organizations** and covering program and policy inclusion, inclusive environments, disaggregated data, and accessible complaints mechanisms.

**Long term support** to two partner organizations, the Community-Based Rehabilitation Association and the Women's Humanitarian Organization, involved **comprehensive field assessments, tailored intervention plans** for each, and the development of a unified documentation system to **enhance service quality.**



## Under resource development and production,

We created practical tools and materials that promote inclusive work and strengthen documentation and data-driven planning; through:

Conducting a **mapping of services** for people with disabilities in the Palestinian community and compiling them on a publicly accessible online platform to facilitate knowledge of available services and service providers.

Adapting the **psychomotor education activity guide for KG1**, originally developed under the Early Childhood Program, into an inclusive manual in line with comprehensive inclusion standards.

Publishing an introductory booklet on **Down syndrome** and another on **Autism Spectrum Disorder**, both prepared under the supervision of specialists and written in simplified, reader-friendly language.

Developing a dedicated **Management Information System (MIS)** for partner organizations providing services to Palestinian people with disabilities, aimed at strengthening data management, improving data quality through accurate inputs, and facilitating coordination and information-sharing among stakeholders working on disability inclusion and service provision.

Developing and updating the **database on people with disabilities** to improve access to information and increase service delivery efficiency.

## Under rehabilitation and therapy,

We supported the provision of more than 6,500 rehabilitation and therapy sessions distributed as follows:

**1,275 physiotherapy** sessions for over 135 children.

**1,498 occupational therapy** sessions for over 148 children.

**1,688 speech therapy** sessions for more than 95 children.

**422 special education** sessions for 75 children.

**570 psychological support** sessions for around 110 children and adolescents.

**1,120 integrated psychosocial support** sessions attended by 195 children and adolescents.

We also established and fully equipped four **sensory rooms** in four Palestinian camps. These rooms are a key therapeutic and educational tool in disability centers, primarily supporting the holistic development of people with disabilities, especially children. More than **1,150 children with disabilities** benefited from these rooms.

## What impact did we achieve?

**85% of children** who received therapy services **achieved at least two core developmental indicators** (gross motor skills, fine motor skills, or speech benchmarks).

**60% of children** who attended therapy sessions **demonstrated better school inclusion** thanks to coordination between specialists and teachers.

**All institutions** that benefited from the training **adopted action plans and performance indicators** to track progress and measure change more effectively, and **improved their performance** in documentation, planning, and follow-up.

“I want to be strong like Spider-Man and fly across the whole room!” With these enthusiastic words, Ibrahim begins his therapy session with his physiotherapist, Lina Al-Shayeb. He shows off his tiny “muscles,” laughs with confidence, and promises to eat all his food to grow stronger. A few months after starting therapy, Ibrahim’s first milestone was sitting independently, then standing, and now he has begun to take a few steps. Ibrahim has cerebral palsy, but his engagement with therapy and the progress he has made have been remarkable.

— Ibrahim



## Elderly Care

As people grow older, their suffering doubles especially for those in the camps, where communities live under the weight of poverty and chronic illnesses.

Our intervention adopts a comprehensive approach centered around:

Providing **food security** in the form of food vouchers, benefiting **615 elderly** individuals.

Delivering **medical and hospitalization support** to **104 elderly** individuals who received partial coverage for the cost of needed surgeries and tertiary care.

Offering **home healthcare** services to **736 elderly** individuals.

Distributing **assistive devices** to **97 elderly** individuals and providing physiotherapy sessions for **142 beneficiaries**.

Delivering **psychosocial and recreational support** to promote mental well-being, with **943 elderly** individuals participating in a variety of recreational activities.



Photo by: Social Support Society

## What impact did we achieve?

**87%** of the total elderly beneficiaries **reported an improvement in their health condition and mobility** as a result of physiotherapy sessions and the distribution of mobility aids.

**91%** felt **less lonely** and more socially connected thanks to home visits and recreational activities.

“When you spend your days alone at home, unable to move, you realize the true meaning of hearing a knock on the door and finding someone asking about your health and psychological well-being. This project gave us a space of joy and support in every form, healthcare, food vouchers, physiotherapy sessions, and diverse activities. At this age, every moment of care equals hope and happiness.”

— **Rahija Zeid**  
Beddawi Camp





## Provision of medical supplies and equipment for health service providers

Improving the quality of healthcare services requires strengthening the capacities of the institutions that provide it.

To this end, we **equipped Human Call Hospital in Ain el-Helwi camp with an ultrasound device and a laparoscope**, both of which have become essential tools for endoscopic surgery and internal organ imaging. To ensure the sustainability of healthcare services, we also supported the salaries of **78 members of the hospital's medical staff**.

**In addition, we provided four specialized machines for the production of prosthetic limbs** to the prosthetics workshop at the Mousawat Organization in Mar Elias camp.

# Towards a Stronger Society

## Community Support

We strengthened the **readiness of the Civil Defense** in Burj El-Barajneh camp by providing search-and-rescue equipment and specialized firefighting materials, improving the quality of its core interventions within the camp and its surroundings.

We celebrated the inauguration of the **Mada Center for Development and Capacity Building, affiliated with Sila Association** in Saida, after fully equipping it to offer diverse vocational programs and courses across multiple fields. It is expected that more than **260 young women** will benefit annually from these trainings, directly enhancing their employment and self-employment opportunities and providing them with practical tools to enter the labor market with confidence and competence.

## Omar Abdul Hadi Playground

The playground has been transformed into a platform for recreation and sports, and a gathering space for diverse activities for all members of the community.

The total number of beneficiaries exceeded **5,000 people** during 2025. Activities varied between sports such as mini-football, fitness training, and basketball, where a girls' basketball team was launched, as well as cultural and community events, specialized workshops, and more.

## Ahmad Abu Ghazaleh Library

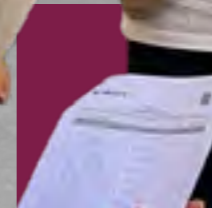
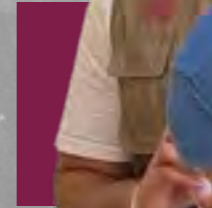
The library has succeeded in becoming a community hub for the residents of Wavel Camp and its surroundings, welcoming more than **1,500 visitors** during 2025.

A total of **1,283 book lending** was recorded. The activities it organized and hosted ranged from children's activities to those targeting youth and women, including specialized training courses, seminars, and a variety of community events.



# Securing Humanitarian Relief

◆ Humanitarian Assistance



# Humanitarian Assistance

## Kidney Dialysis

Dialysis is not covered under UNRWA's services.

Taawon therefore supports the provision of free treatment at two centers run by the Palestinian Red Crescent Society: one at Al-Hamshari Hospital in Saida and the other at Safad Hospital in Beddawi Camp. In 2025, **158 women and men** with kidney failure received life-saving treatment. A total of around **20,411 dialysis sessions** were delivered, at a rate of two to three sessions per patient per week.

## What impact did we achieve?

All kidney failure patients who were interviewed expressed high levels of satisfaction with the dialysis services, particularly in terms of quality of care, efficiency of service delivery, and the professional and respectful conduct of the medical staff.



“My health took a major downturn while I was still in my thirties. I began dialysis three times a week, and since then my life has been completely turned upside down. These sessions have undoubtedly saved my life, but they have also changed it entirely. I had to stop working, and my visits to the dialysis center became like a part-time job. I feel that I have managed to maintain the rhythm of my life, and I now belong to a new community at the center whom I consider my second family.”

— Sara Al-Hassan  
Beddawi Camp



## Direct Assistance

At a time when more than 83% of Palestinian refugees live below the poverty line, we recognize the importance of direct assistance in easing the burden on the most vulnerable families by helping them secure their basic needs, food, clothing, and heating.

### Food and Non-Food Vouchers

In Mar Elias and Shatila camps, **438 families** received food and non-food purchase vouchers worth **USD 95 per family** during the month of Ramadan. In Rashidieh camp, **2,767 families** received similar vouchers valued at **USD 88** per family.

### Heating Vouchers

In Wavel Camp in Baalbek, **1,200 families** received **fuel purchase vouchers** for heating worth **USD 150** per household.

### Direct Cash Assistance

A total of **658 families in the Tyre camps** (Al-Buss, Rashidieh, and Burj Al-Shamali) benefited from the first phase of cash assistance, ranging between **USD 85** and **USD 145 per family** depending on household size.

### Distribution of Winter Clothing for Children

A total of **7,930 children** enrolled in **81 kindergartens** across different camps received winter clothing kits.



“As a widow with no other source of income, I rely on selling seasonal wild greens to make a modest and unstable living. In winter, most of what I earn goes toward heating, often forcing me to ration warmth and endure harsh conditions. With the fuel voucher I received, I was able to secure nearly a month of heating, bringing not only physical warmth, but also a sense of relief and dignity during the coldest time of the year.”

— **Samira Sharaat**  
Wavel Camp




“Our income does not allow us to buy clothes for my children, so I depend on aid or second-hand clothing. This is the first time my daughter receives a full set of brand-new clothes at once. She is over the moon with joy.

— Ruba  
Beneficiary of the winter clothing distribution

# What We Aim to Achieve

Through our three pathways, we reached more than **180,000 Palestinian refugees in Lebanon**. While significant progress has been made, we will continue to prioritize education, employment, and empowerment, alongside sustained humanitarian support serving the most vulnerable.

 Photo by: General Union of Palestinian Women

# Financial Indicators

## Welfare Association, Lebanon

### STATEMENT OF FINANCIAL POSITION As at 31 December 2025

	Notes	2025 US\$	2024 US\$
<b>ASSETS</b>			
Contributions receivable	7	5,065,254	5,690,649
Prepayments and other assets		7,771	7,738
Bank balances and cash	8	1,496,376	1,901,957
Due from head office		626,356	429,793
<b>TOTAL ASSETS</b>		<b>7,195,757</b>	<b>8,030,137</b>
<b>LIABILITIES AND NET ASSETS</b>			
<b>Liabilities</b>			
Accounts payable and accruals	9	370,749	295,047
Deferred contributions		5,973,587	7,195,739
<b>TOTAL LIABILITIES</b>		<b>6,344,336</b>	<b>7,490,786</b>
<b>NET ASSETS</b>		<b>851,421</b>	<b>539,351</b>
<b>TOTAL LIABILITIES AND NET ASSETS</b>		<b>7,195,757</b>	<b>8,030,137</b>

The financial statements were authorised for issue on 28 April 2026 by:

  
Sawtan Al Masi  
Lebanon Country Director



# Growing with Our Partners

1. Al Izza Educational and cultural Association
2. Almobader Association
3. Ahlam Lajea Association
4. Association Najdeh – Lebanon
5. Community-Based Rehabilitation Association
6. Children and youth center
7. Fraternity Association for Social and Cultural Work
8. General Union of Palestinian Women
9. Ghassan Kanafani Cultural Foundation
10. Health Care Society
11. Human Call Association
12. Human development center
13. Jannat Al-Ibdaa Association
14. Just Childhood
15. Mousawat Organization
16. Palestinian Students' Fund
17. Palestinian Red Crescent Society
18. Peace for You Association
19. Sanad Organization
20. Social Support Society
21. Saint Joseph University of Beirut -Institut Libanais d'Educatuers
22. The Arab Resource Centre for Popular Arts
23. The National Institution of Social Care and Vocational Training – Beit Atfal Assumoud
24. Unite Lebanon Youth Project
25. Women's Humanitarian Organization
26. Women's Program Association

# With Your Support, Lives Flourish

- Arab Fund for Economic and Social Development
- Danish Muslim Aid (DM-Aid)
- IDRF (International Development and Relief Foundation)
- Lebanon Humanitarian Fund (LHF)
- Taawon UK
- United Nations Children's Fund (UNICEF)
- United Nations Development Program (UNDP)
- United Nations Relief and Works Agency (UNRWA)

## Individual donors

Faisal Alami, Family of the late Nayf Maarouf, Fatima Abu Ghazaleh, Gamal Abu Ali, Jawdat Al Shawa, Lina Al-Qattan, Maher Abu Ghazaleh, Ousama Abu Ghazaleh, Omar Al-Qattan, Omar Abdul Hadi, Srouji Family, Sumaya Al-Jishi Abu Ghazaleh

In addition to several individuals who prefer to stay anonymous. We are very grateful for their support.

## Together on the Path to Empowerment

This year, your support went beyond meeting urgent needs. It provided protection, stability, and the power of choice, enabling individuals to pursue university, stay in school,

access essential healthcare, build skills, and strengthen our communities. In the face of ongoing challenges, you helped create real and lasting opportunities.

**To everyone who stood with us on this journey: thank you. We look forward to continuing this path together.**





---

**@TaawonLebanon**  
[www.taawon-lebanon.org](http://www.taawon-lebanon.org)